

Creatures

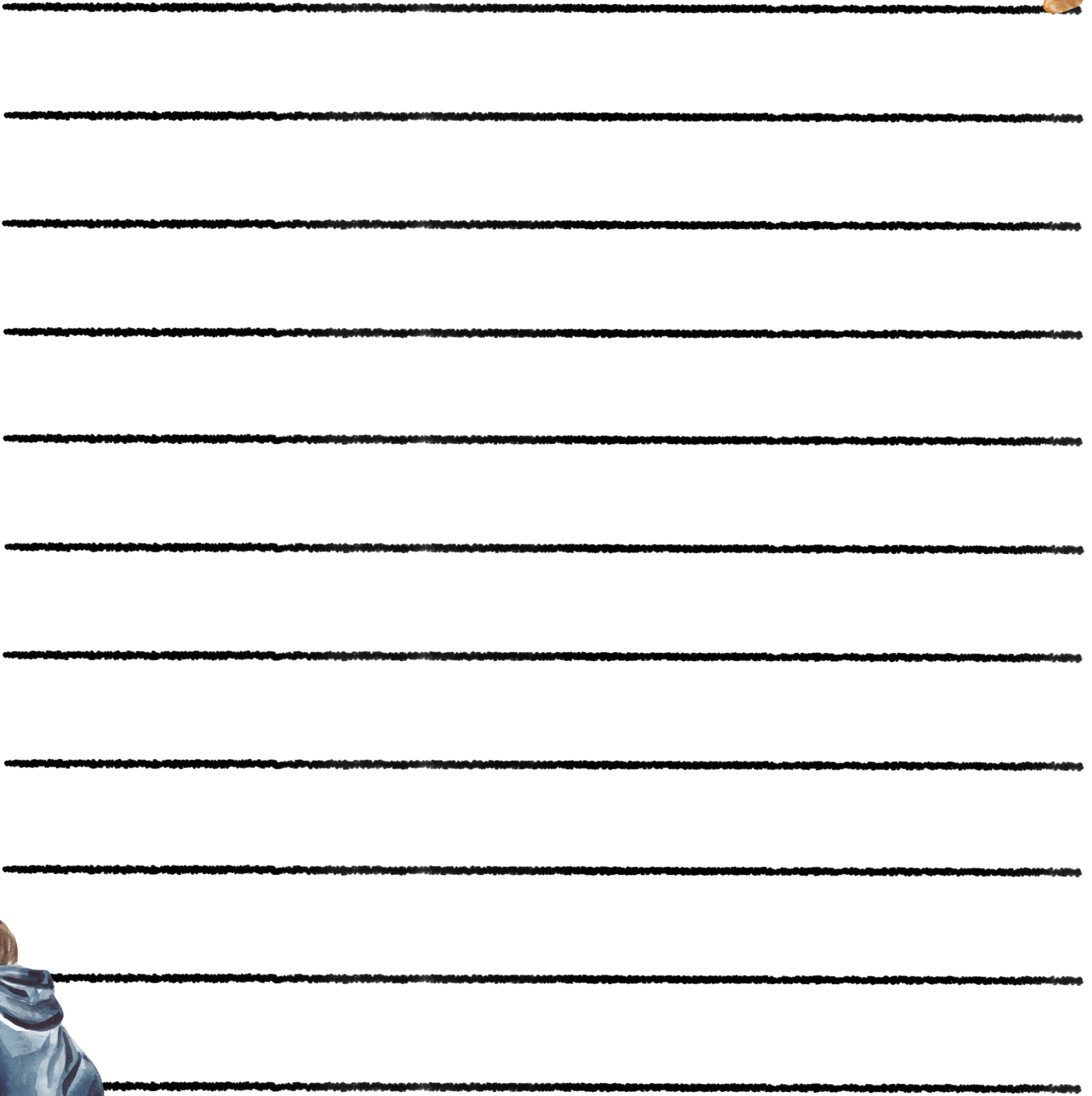
Category One - creatures that aid my characters

For instance, horses help carry the hero from point A to point B. A dog may help track down another character.

[illegible]



These are the ones we would consider “pets.” They are usually given personalities and have more prominence in the book.



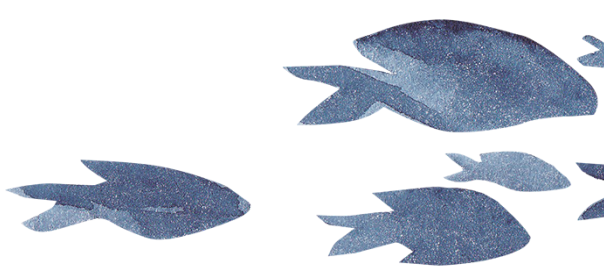
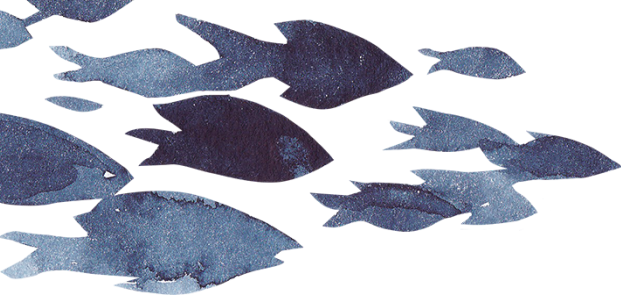
Creatures

Category Four - creatures that fill out the setting

These are the every day, ordinary creatures that flit and fly through the scenes (like birds and squirrels). Or creatures the hero hears, but never sees (like coyotes).



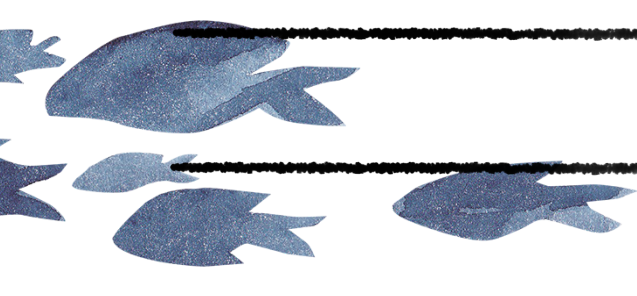




Creatures

Category Five - creatures that provide food for the humans

This includes those that produce food, like goats for milk and chickens for eggs. As well as animals that are food, like fish, rabbits, shrimp, and deer.

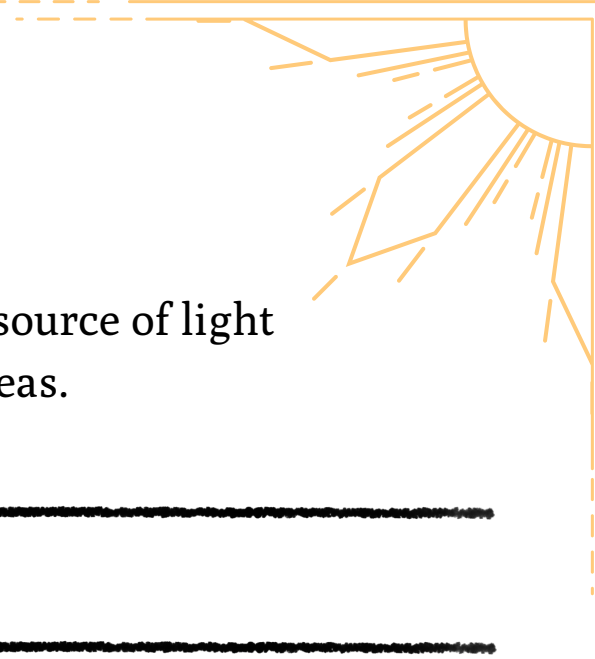


Light

Think about what you want for a source of light and write down your ideas.

Sky

Write out ways you want the elements of sky to affect the story (rain, thunder and lightning, snow, hail, cloudy days, starry night, etc.).



sky

Write a scene and tell how the sky looks at sunrise through your character's eyes.

The image features a decorative header at the top with a wavy, layered pattern in shades of orange and yellow. Below this pattern, there are several horizontal lines for writing. The first line is a solid orange band. This is followed by a series of alternating thin black lines and wider white spaces, creating a ruled effect for text entry. The overall design is clean and modern, suitable for a notebook or a form.

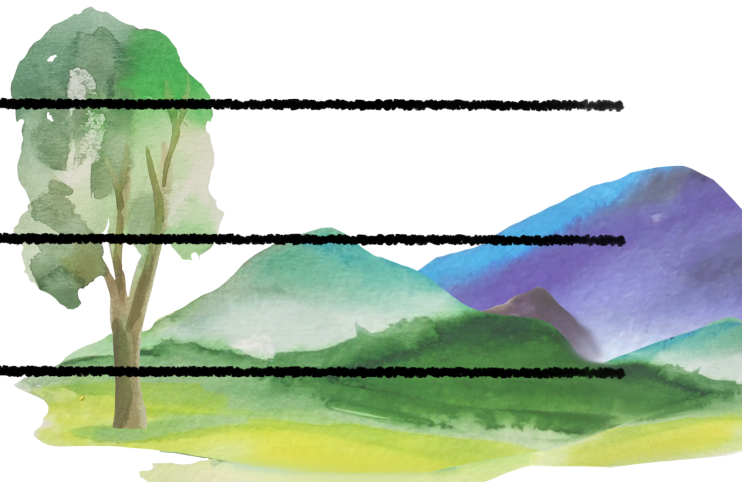


Sea

Ocean, rivers, streams, lakes, fresh springs, waterfalls, lagoons -
what will you use?

Earth

Forests, meadows, deserts, valleys, hills, cliffs, mountains, beaches, coasts -
what will you choose?





Vegetation

Fruit trees, berry bushes, root veggies, fruit vines, wheat and other grains, all kinds of plants producing food!

Don't forget to mark sources of water (ocean, rivers, etc.) and types of terrain (mountain, forest, etc.) on your map!

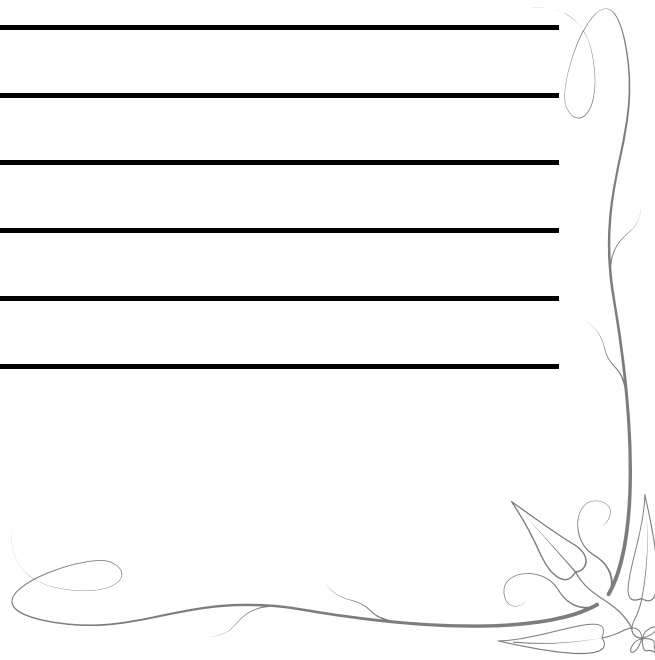


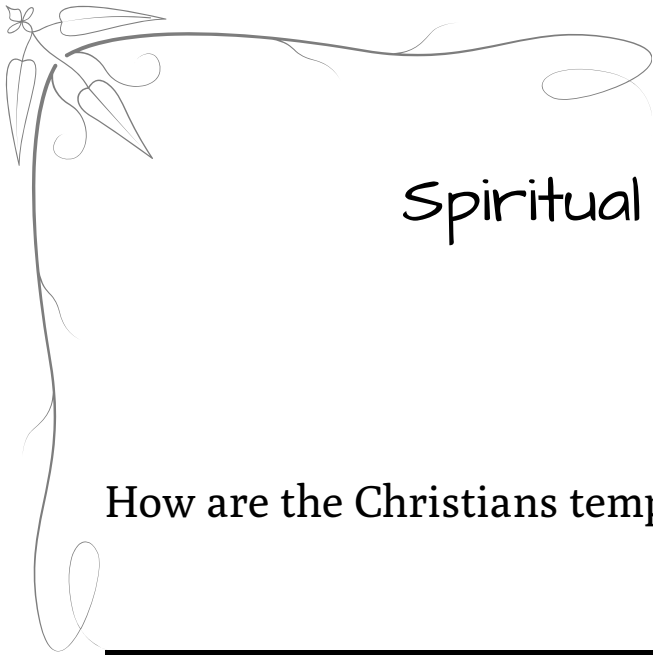


Spiritual State of the Land

What is the widely accepted religion in your land?
In whom do people believe?

How are the Christians living?

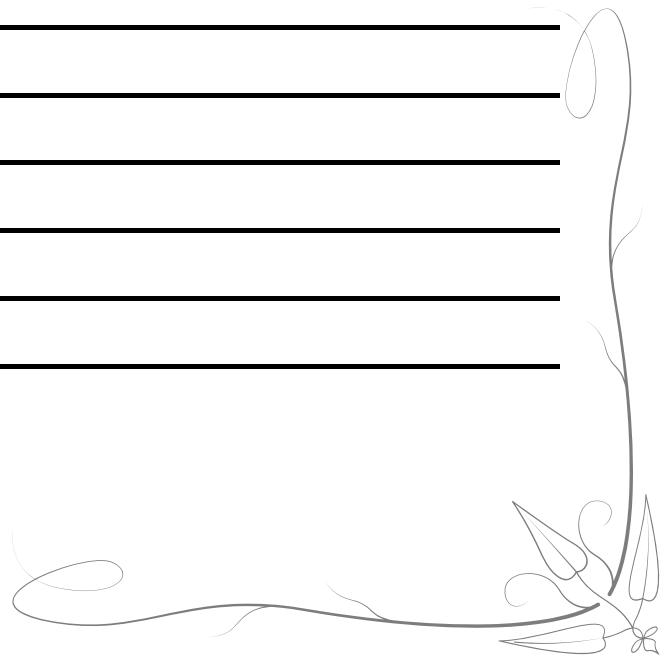


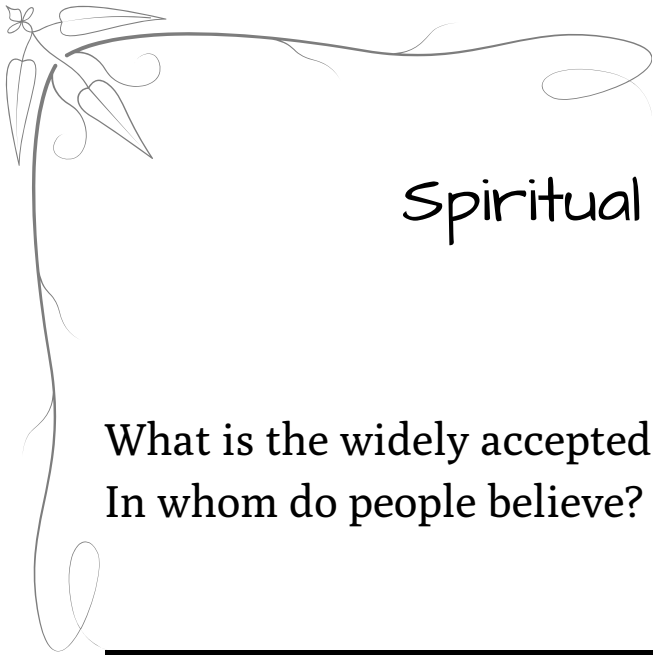


Spiritual State of the Land

How are the Christians tempted or persecuted?

What helps or hinders the Gospel being preached?



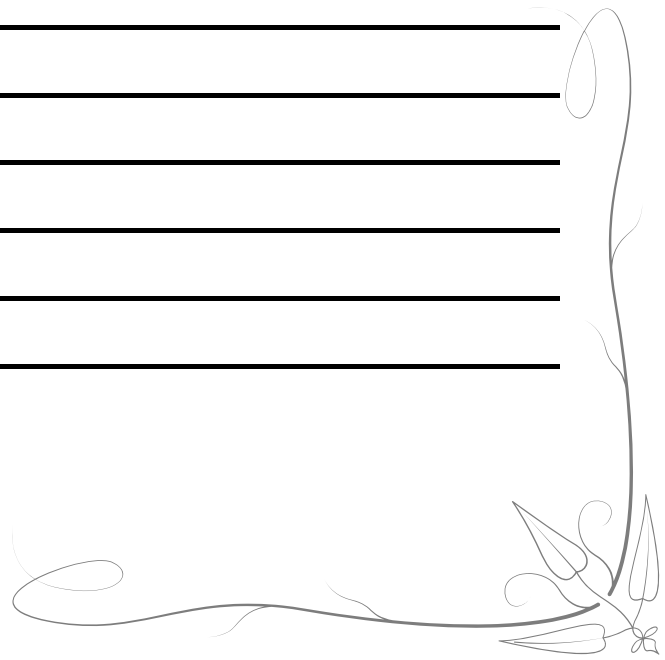


Spiritual State of the Land

Before Christ

What is the widely accepted religion in your land?
In whom do people believe?

Who believes in the One, true God?



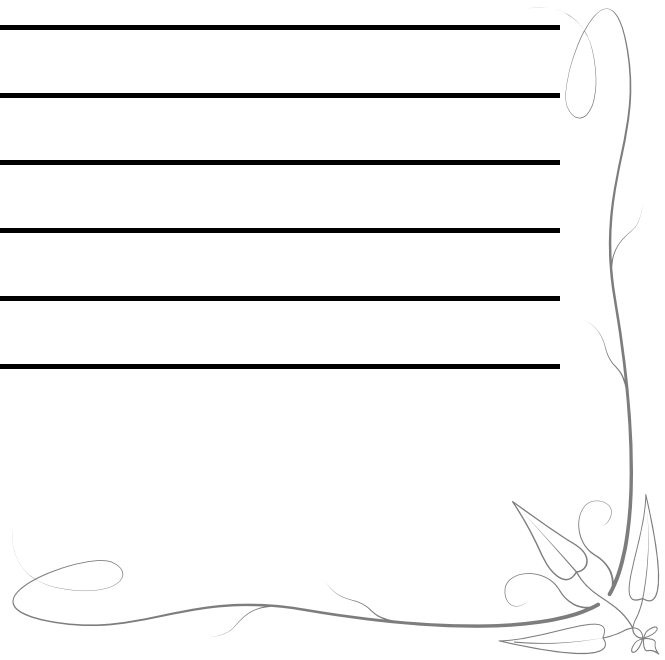


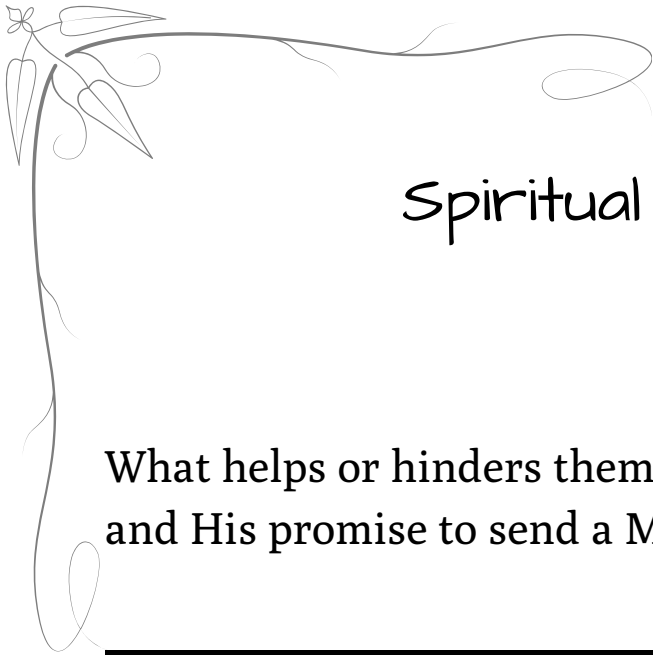
Spiritual State of the Land

Before Christ

How has God revealed Himself to them?

How are those who believe in the One, true God set-apart
from people of other religions?





Spiritual State of the Land

Before Christ

What helps or hinders them in believing God
and His promise to send a Messiah?

Other Ideas:

